

Spelling Strategies:
ways to help you remember the correct spelling.



7.WG4

- I can use a variety of strategies and resources to spell familiar and unfamiliar vocabulary and subject-specific words correctly.

8.WG4

- I can use a variety of strategies and resources to spell familiar and unfamiliar vocabulary and keywords correctly.

9.WG4

- I can use a variety of strategies and resources to spell familiar and unfamiliar vocabulary and subject-specific words correctly.

10.WG4

- I can use a variety of strategies and resources to accurately spell an increasing range of familiar, unfamiliar and subject-specific words

11.WG4

- I can use a variety of strategies and resources to accurately spell an increasing range of familiar, unfamiliar and subject-specific words.

Draw a word within a word

business



opportunity

Draw a word within a word

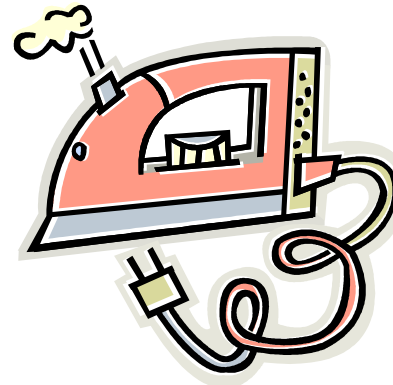
parliament separate



environment

management

0-60



Draw a word within a word

pronunciatio metaphor

n



slaughter

mistletoe



Pyramid Words

e

ex

ext

extr

extra

extrao

extraor

extraord

extraordi

extraordin

extraordina

extraordinar

extraordinary

Rainbow Words



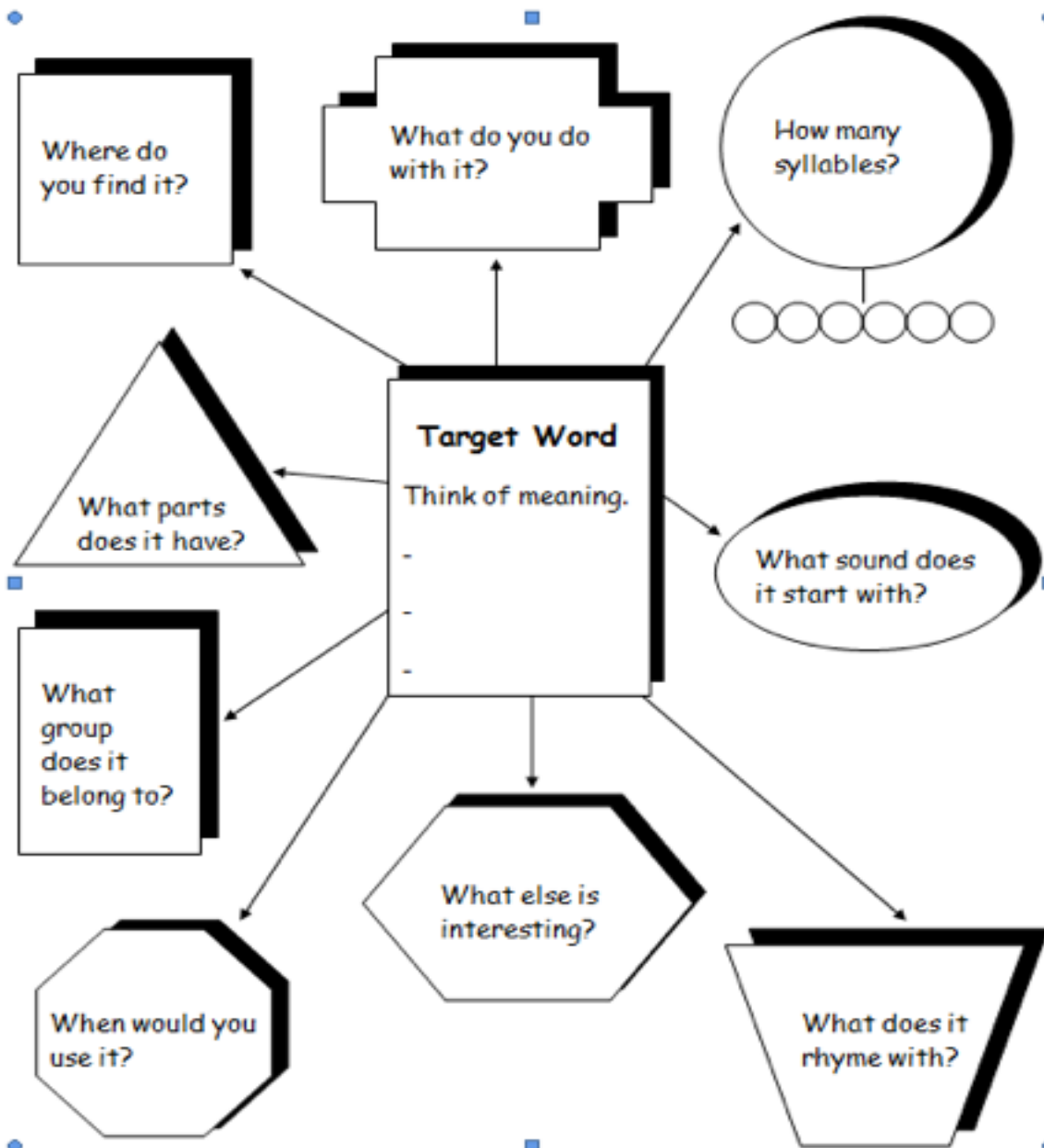
biography

Breaking up words

construction

Two vertical blue lines are drawn across the word 'construction'. The first line is positioned between the 'n' and 's' of 'construction', and the second line is positioned between the 't' and 'i' of 'struction'. Both lines extend from above the word to below it.

Word Map



Word Map

The word is a:

- noun
- verb
- adjective
- conjunction
- preposition

Drawing to help me remember

It means/ Its synonyms are:

Words in its family are:

Target Word
Write it in a way to help you to remember.

Its opposites/ its antonyms are:

It rhymes with:

Write a sentence to show how to use the word.

